



300 Cloverleaf Road, York, PA 17406
www.aaronenterprises.com
717-854-2641

Project: CTDOT MNRR Bridge Replacement

Location: Stamford, CT

Project Details:

Installed 392 linear feet of 42-inch steel casing to accommodate the relocation of high-voltage electric duct banks. The installation included four crossings beneath the Long Island Railroad, executed in hard rock conditions using a Robbins SBU. To mitigate the risk of ground movement and protect existing infrastructure, the crown of each bore was soil stabilized to minimize potential settlement. Following casing installation, a multi-conduit duct bank was precisely placed within the 42-inch sleeves and grouted in place to ensure structural integrity and long-term durability.

Final Product: Electric Cable System- Installed 4- 42" Crossings via Auger Bore / Hand Tunnel

Geology: Granite rock/ boulders overlayed by sand and gravels

Project Profile

Auger Boring

Completion Date

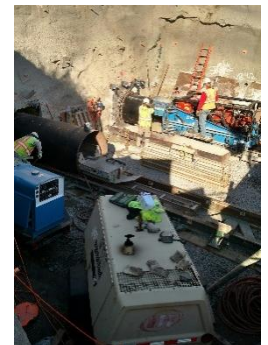
December 2016

Installation Methods:

Auger Boring
Pipe Jacking and Tunneling
Soil Stabilization
Grouting

Markets Served:

Heavy Civil Construction
Transportation
Railway
Electric



Owner:

CTDOT

Engineer:

AECOM

Contractor:

Yonkers Contracting

For More Information:

Paul E. Grove – Vice President - (717) 854-2641 ext. 234
Reference Job # 1536928

