



300 Cloverleaf Road, York, PA 17406
www.aaronenterprises.com
 717-854-2641

Project: PSEG Western Nassau Transmission
Location: Nassau County, NY

Project Details:

Due to high ground water table and extremely tight tolerances, the guided pilot methodology was selected for this crossing. This was a three-pass method consisting of first installing the pilot tubes, then a temporary 24" casing and finally the 42" casing. Once the 42" casing was installed multiple HDPE conduits were pulled inside supported by casing spacers and the annular area filled with a thermal grout.

Final Product: Electric Cable System

Geology: Sand, Clay, Silt

Project Profile

MicroTunneling- Guided Pilot Boring

Completion Date

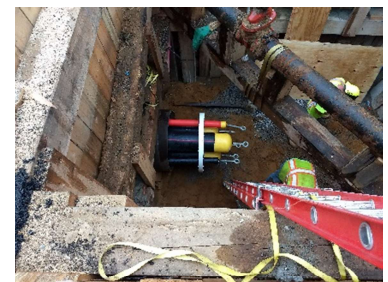
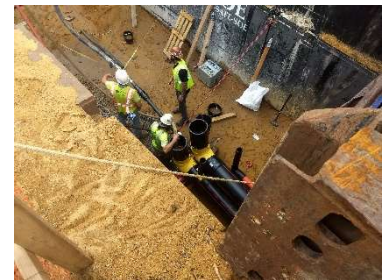
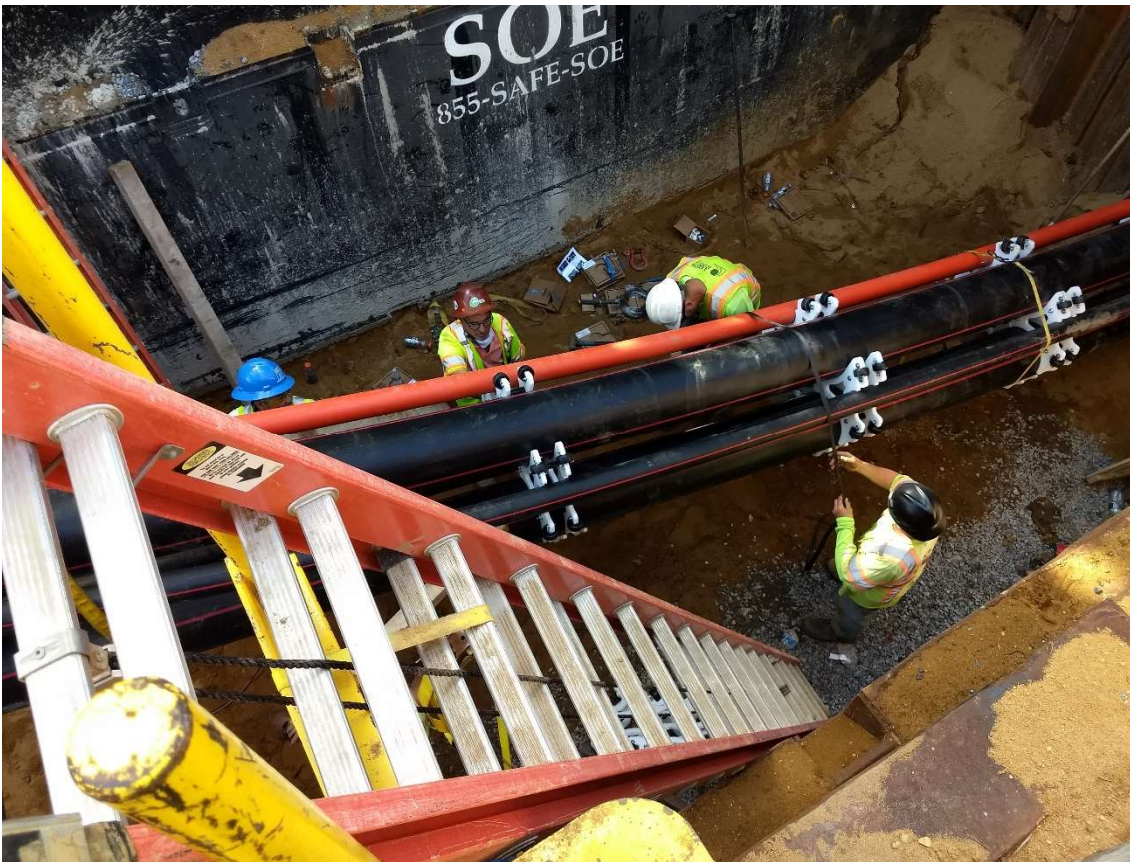
September 2020

Installation Methods:

MicroTunneling- Guided Pilot Boring
 Grouting

Markets Served:

Electric



Owner:

PSEG Long Island

Engineer:

Haley & Aldrich

Contractor:

Grace Industries LLC

For More Information:

Paul Grove – Vice President - (717) 854-2641 ext. 234
 Reference Job # 1913926

