

Project Profile

Pipe Rehabilitation

Completion Date

August 2020

Installation Methods:

Auger Boring
 Pipe Jacking & Tunneling
 Pipe Ramming
 Pipe Rehabilitation
 Grouting

Markets Served:

Storm Water
 Transportation
 Heavy Civil Construction
 Railway

Project: MTA Baltimore Light Rail Emergency

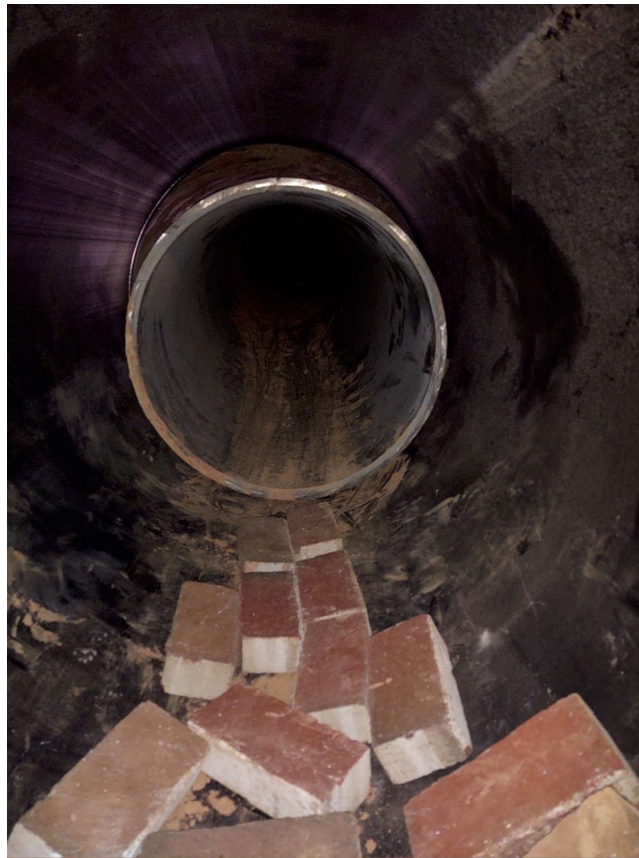
Location: Baltimore, MD

Project Details:

A stormwater pipe made of part clay, part corrugated metal and part cast iron, failed under a Light Rail commuter line in Baltimore. Using a pipe swallowing technique, AEI implemented a TT Technologies Taurus Pipe Rammer to install a new 60" diameter steel casing over the collapsed pipes. Original host pipes were removed with winches, tunneling methods and an auger bore machine. The 36" Snap Tite liner pipe was installed through the casing and a lightweight cellular grout was pumped in the annular space between the casing and the carrier.

Final Product: 60 LF of 60" Diameter Steel casing with 36" Snap Tite HDPE stormwater pipe.

Geology: Clay, sand, silt and wood obstructions.



Owner:

MDOT/Maryland Transit Administration

Engineer:

RK&K, Inc.

Contractor:

Rhinehart Railroad Construction, Inc.

For More Information:

Robert L. McDowell, PE - Project Manager - (717) 854-2641 ext. 230
 Reference Job # 2011028