

Project: Monument Street Emergency Storm Pipe Repair

Location: Baltimore, MD

Project Details:

Install 22' Diameter Shaft 40 VF in depth down to collapsed 120" Storm Water Pipe. Cut access point into 120" pipe. Clearance collapse and line with 114" liner plates.

Final Product: 120" Storm Water Piping

Geology: Sands/ Silts/ Clay

Project Profile

Vertical Shafts

Completion Date

December 2012

Installation Methods:

Pipe Jacking and Tunneling

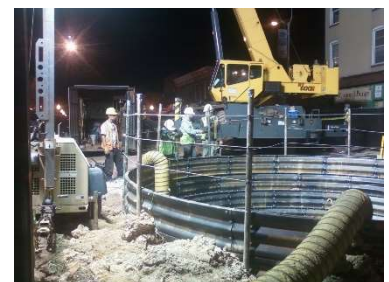
Pipe Rehabilitation

Grouting

Vertical Shafts

Markets Served:

Sewer & Water



Owner:

City of Baltimore

Engineer:

City of Baltimore

Contractor:

Allan Myers

For More Information:

Paul Grove - Vice President - (717) 854-2641 ext. 234
Reference Job # 1232137