

Project: Duke Energy Central Corridor

Location: Cincinnati, OH

Project Details:

Aaron Enterprises, Inc. was contracted to complete a variety of challenging trenchless crossings on a high-profile Duke Energy project in Cincinnati. In total, AEI completed 2,300 LF of 20" installs by auger bore, pipe ramming, guided pilot (360 LF) and air hammer on 17 crossings. AEI excavated all pits ranging from 10' to 28' deep in tight work areas on city streets. Soil stabilization was required at high water table locations. In addition, AEI completed 4,550 LF of 20" install by HDD on three crossings ranging from 1,600 LF to 1,450 LF.

Final Product: 20" Steel Gas Main

Geology: Glacial till, interbedded shale/siltstone, sandstone

Project Profile

Pipe Ramming

Completion Date

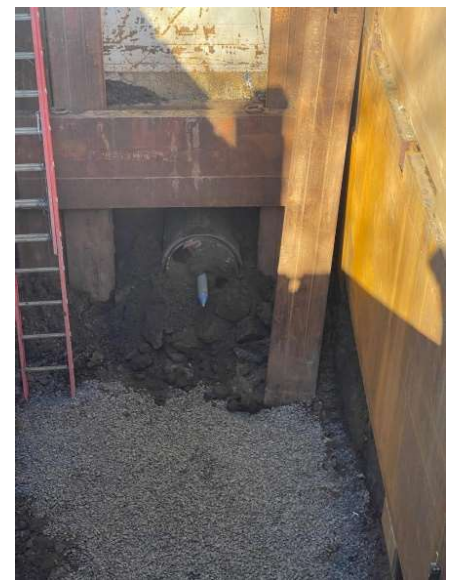
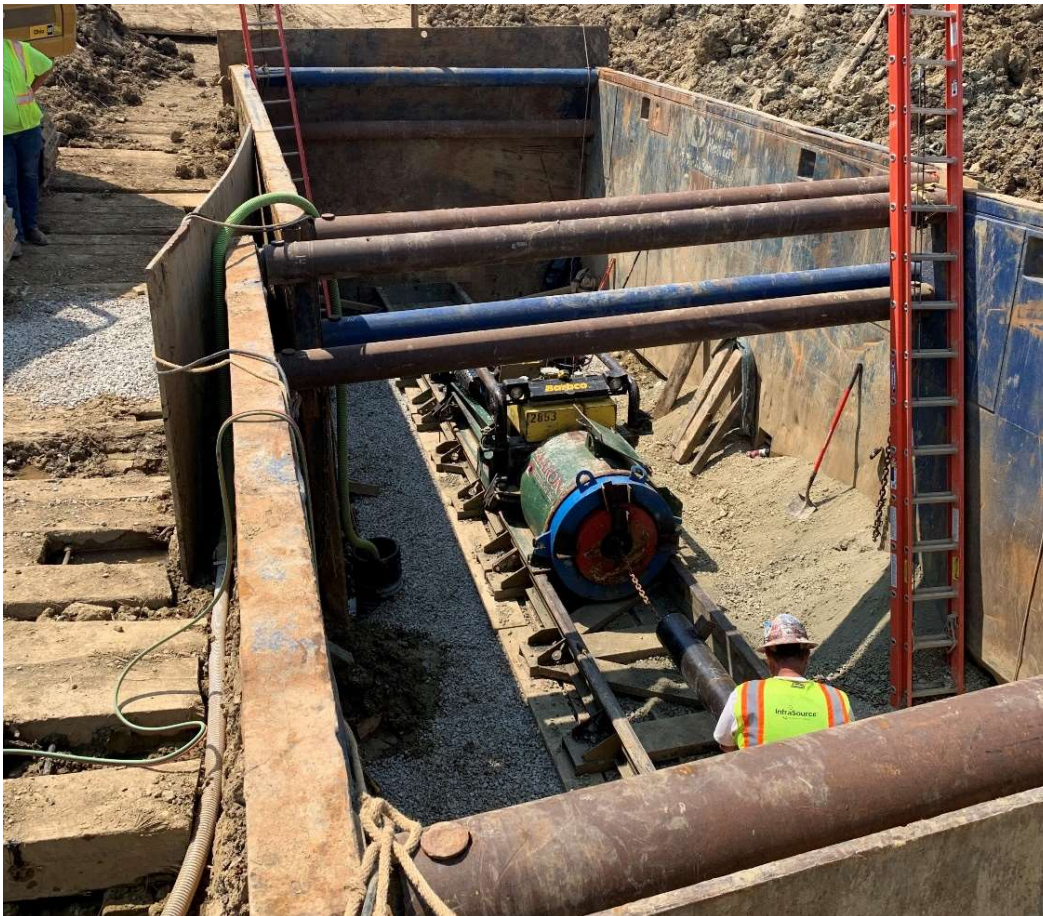
October 2021

Installation Methods:

Auger Boring
Horizontal Directional Drilling
Pipe Ramming
MicroTunneling
Soil Stabilization

Markets Served:

Oil & Gas



Owner:

Duke Energy

Engineer:

Burns & McDonnell

Contractor:

InfraSource

For More Information:

Paul Grove - Vice President - (717) 854-2641 ext. 234
Reference Job # 2029526